

Documentation: ***Champagne Polka*** 2011 Morten Norbye Halvorsen at Gaudel de Stampa, Paris.

<http://gaudeldestampa.fr/>

## Gaudel de Stampa

### Champagne Polka by Morten Norbye Halvorsen

June 24 - to July 30

#### Opening reception Friday the 24th of June, Recital at 8:30 pm.

The uncorking of Champagne bottles, an endless flow of champagne, chatter, a stroll along an endless balustrade - turning into balconies, twisting into stairs, leading to the tower - wearing a damp hat of clouds.

H.C. Lumbye and Johann Strauss II compositions, present timely percussion and gesture in their *Champagne Gallop* and *Champagne Polka*.

Placing your face close enough to the *Champagne Flute* you feel its drops gently raining upwards. Tapping your feet to  $\frac{3}{4}$  beat.

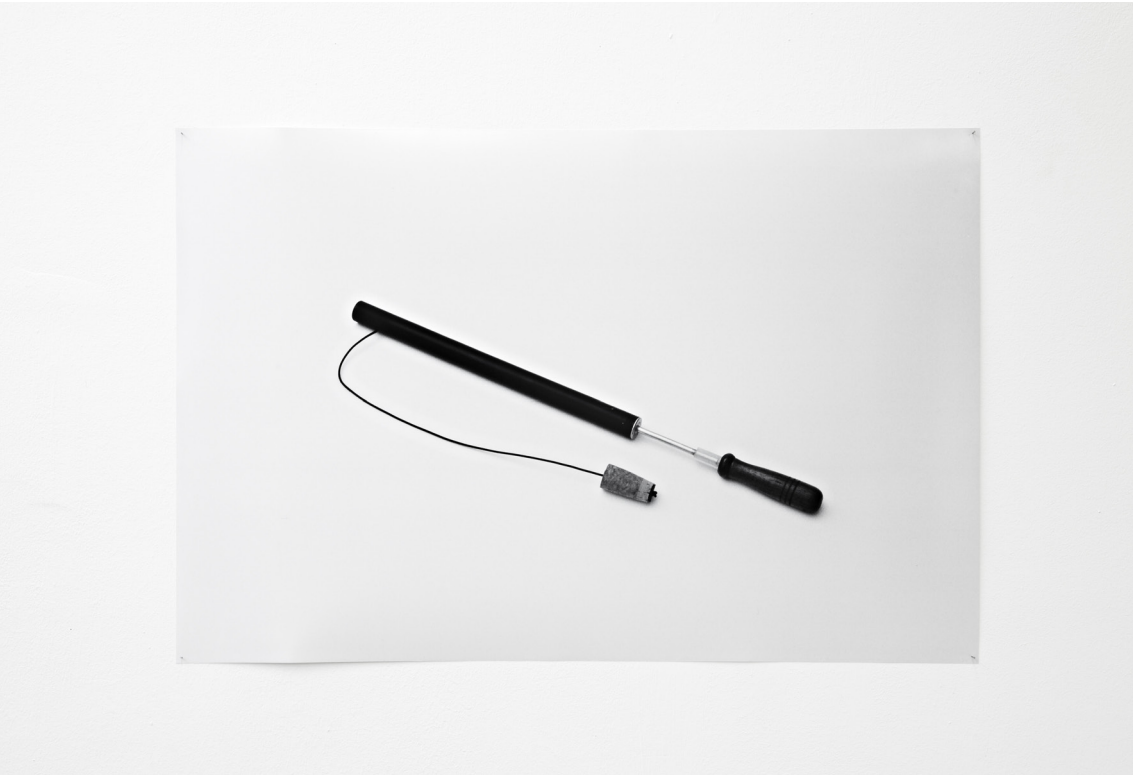
A portrait of the instrument dubbed the *Champagne Flute* will once again become the prime lens for projecting the opening of a champagne bottle.

At the opening evening a short recital of the *Champagne Polka* opus 211. by Johann Strauss II, will be performed to accompany an installation of recent works including: drawing, film, vinyl records and photography.

Morten Norbye Halvorsen b.1980 Stavanger, Norway, currently lives and works in Brussels and Paris.

Recent exhibitions and performances include: *Costume Tracks and Handclaps*, 2011, collaboration with Benjamin Seror, Lithuanian Pavillion, opening event for the Venice Biennale; *L'allouette*, 2011 collaboration with Jessica Warboys, Le Magasin, Grenoble; *Token Took*, 2011, Chert gallery, Berlin; *Clifford Irving Show*, 2010, Objectif Exhibitions, Antwerp; *Repetition Island*, 2010, Centre Pompidou, Paris; *L'allouette*, collaboration with Jessica Warboys, South London Gallery, London; *Paper Exhibition*, 2009, Artist Space, New York; *Clifford Irving Show*, 2009, Cine 13, Paris.







Left: ***Chrome of the Wind*** 2011  
Three black and white photographic prints, 50x75cm  
Installed overlapping from left to right.

Right: ***Landscape Portrait Landscape*** 2011  
Plotter print, 84x118cm





left: **Costume for Paper (Champagne Polka – Vista)** 2011  
Charcoal on paper coated with acrylic varnish, wood, dimensions 145X90cm

Monitor: **Tower** 2011  
Super 16mm, Digital transfer, 4:3 crop, 03:52 min

Righth: **Champagne Flute** 2010,  
Photographic print, 50x75cm.



left: **Costume for Paper (Champagne Polka – Hook)** 2011  
Charcoal on paper coated with acrylic varnish, wood, dimensions 150X90cm

Monitor: **Triangle** 2010  
Video, 02:52 min

Rigth: **Champagne Flute** 2010  
Photographic print, 50x75cm.

**Costume for Paper (Champagne Polka – Vista)** 2011  
Charcoal on paper coated with acrylic varnish, wood, dimensions 145X90cm



Left: ***Champagne Flute*** 2010  
Photographic print, 50x75cm.

Center: ***Endless Balustrade*** 2011  
Black card, attaches parisiennes, 100X60cm

Right: ***Chrome of the Wind*** 2011  
Three black and white photographic prints, 50x75cm  
Installed overlapping from left to right.



Left: **Endless Balustrade** 2011  
Black card, attaches parisiennes, 100X60cm

Center: **Chrome of the Wind** 2011  
Three black and white photographic prints, 50x75cm  
Installed overlapping from left to right.

Right: **Landscape Portrait Landscape** 2011  
Plotter print, 84x118cm  
**Record Table** 2011  
Record player, two unique vinyl records, headphones, felt, table.  
see next page for records.

**Record Table** 2011

Record player, two unique vinyl records, headphones, felt, table.

Record 1, Side A: Portrait of instrument Champagne Flute, 2010

Side B: Richard Foreman reading fragments of his texts, 2010 Fragments recorded, read and written by Richard Forman\*

Record 2, Side A: Portrait of instrument (Chrome of the Wind), 2011

Side B Collection of three Champagne Polka tracks, 2011

\* Richard Foreman b.1937 is an American playwright and avant-garde theater pioneer. He is the founder of the Ontological-Hysteric Theater.

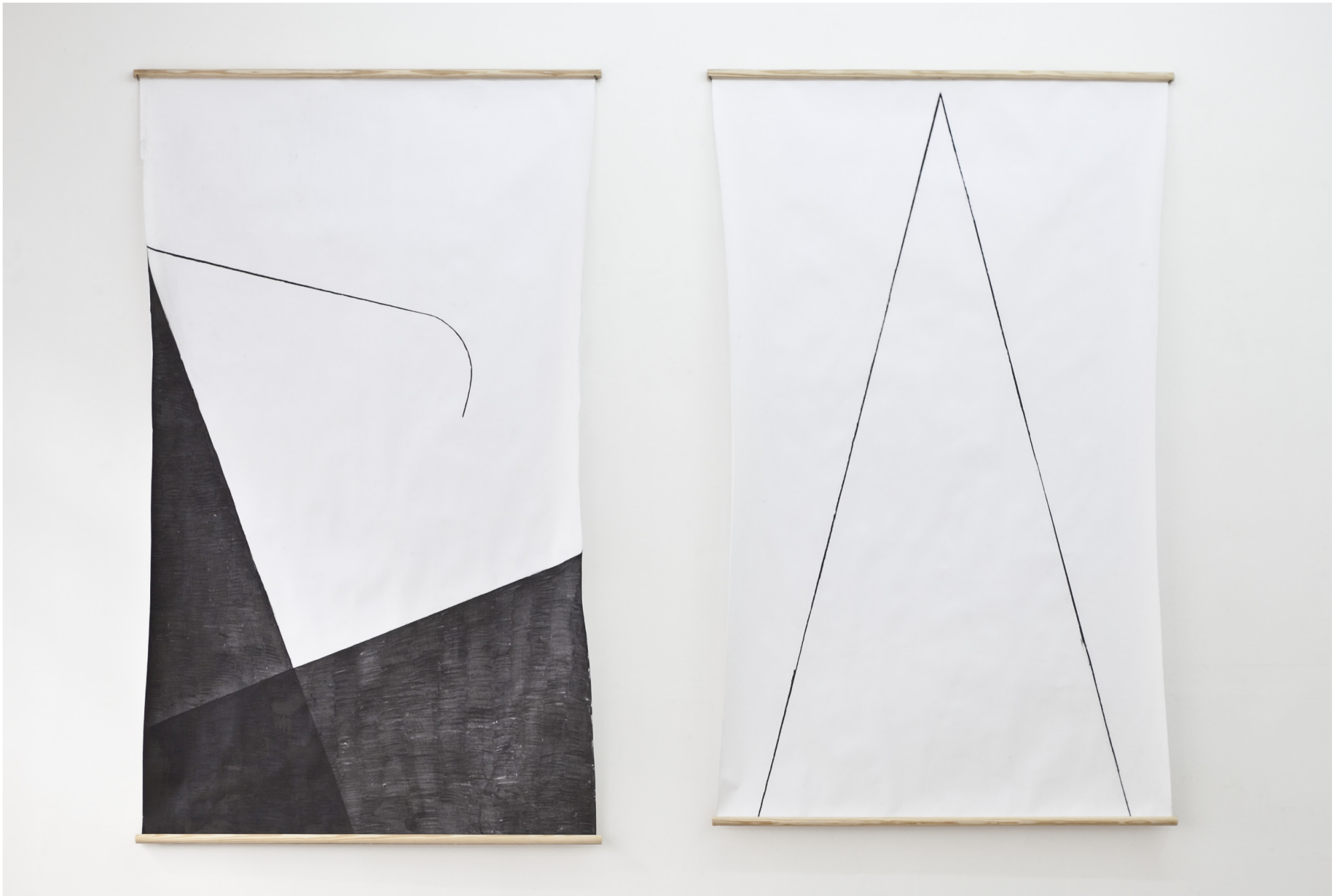




*Champagne Polka*, 2011, Instalation view at Gaudel de Stampa, Paris



*Champagne Polka*, 2011, Instalation view at Gaudel de Stampa, Paris



*Champagne Polka*, 2011, Instalation view at Gaudel de Stampa, Paris





*Champagne Polka*, 2011, Instalation view at Gaudel de Stampa, Paris



*Champagne Polka*, 2011, Instalation view at Gaudel de Stampa, Paris



*Champagne Polka*, 2011, Instalation view at Gaudel de Stampa, Paris



*Champagne Polka*, 2011, Instalation view at Gaudel de Stampa, Paris

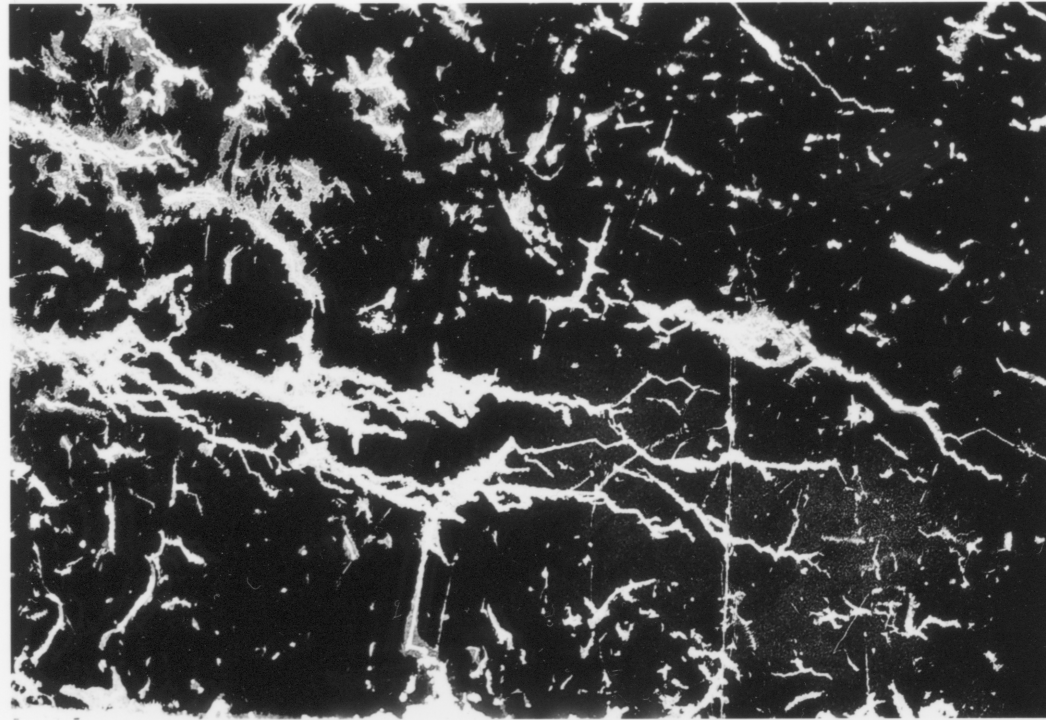


*Champagne Polka*, 2011, Instalation view at Gaudel de Stampa, Paris

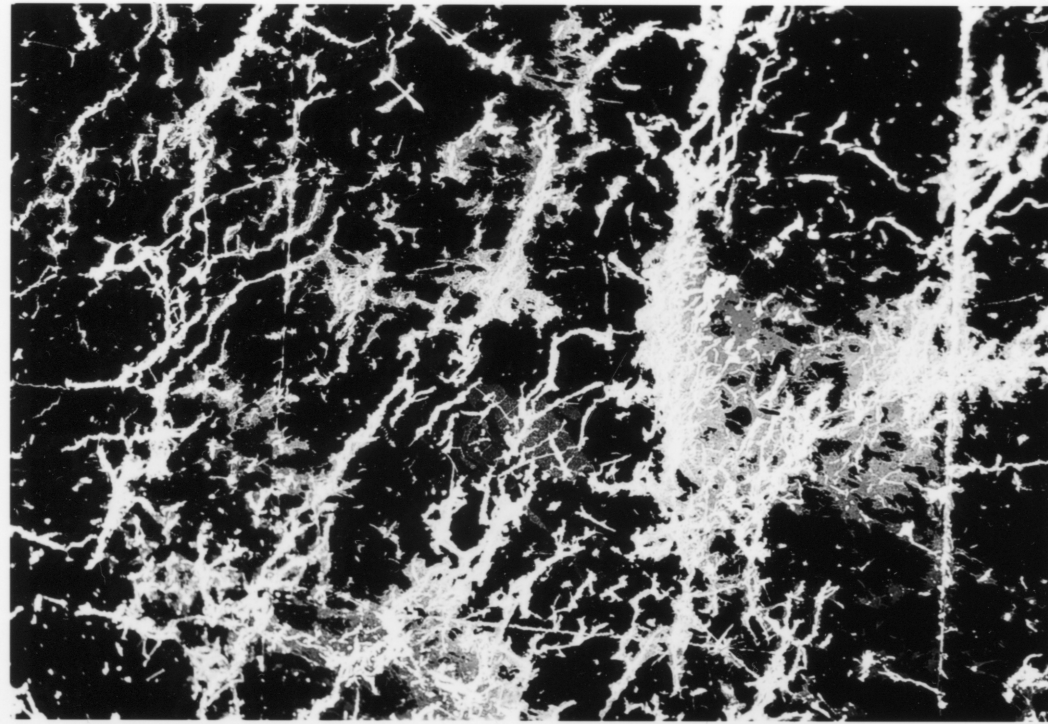




*Champagne Polka*, 2011, Instalation view at Gaudel de Stampa, Paris

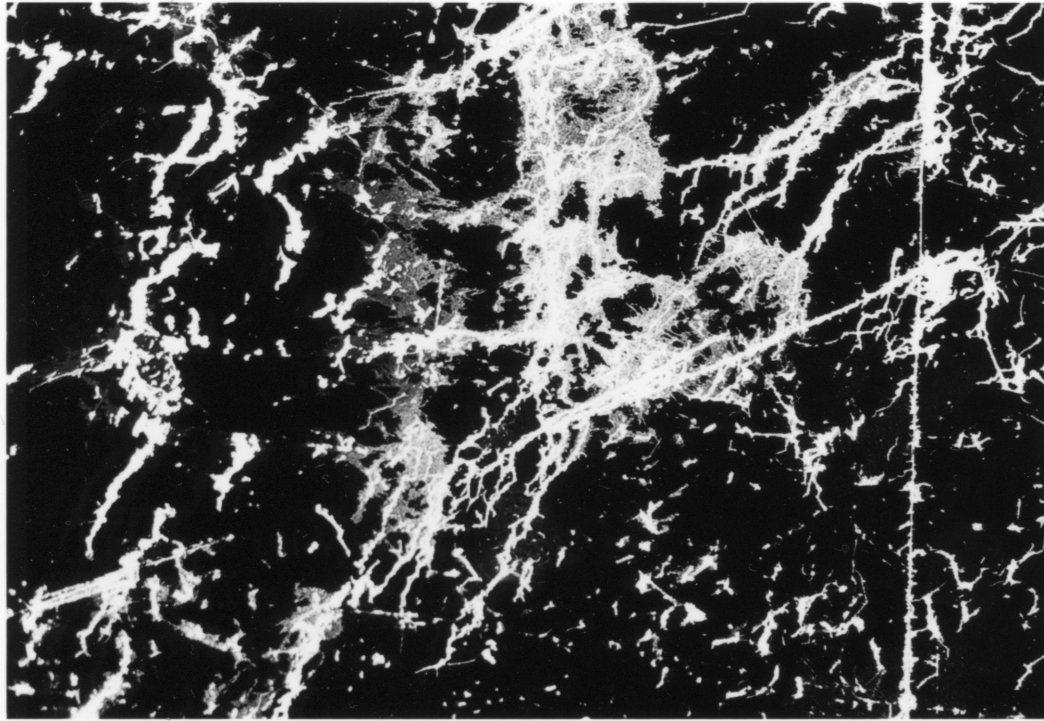


*Champagne Polka*, 2011, Instalation view at Gaudel de Stampa, Paris

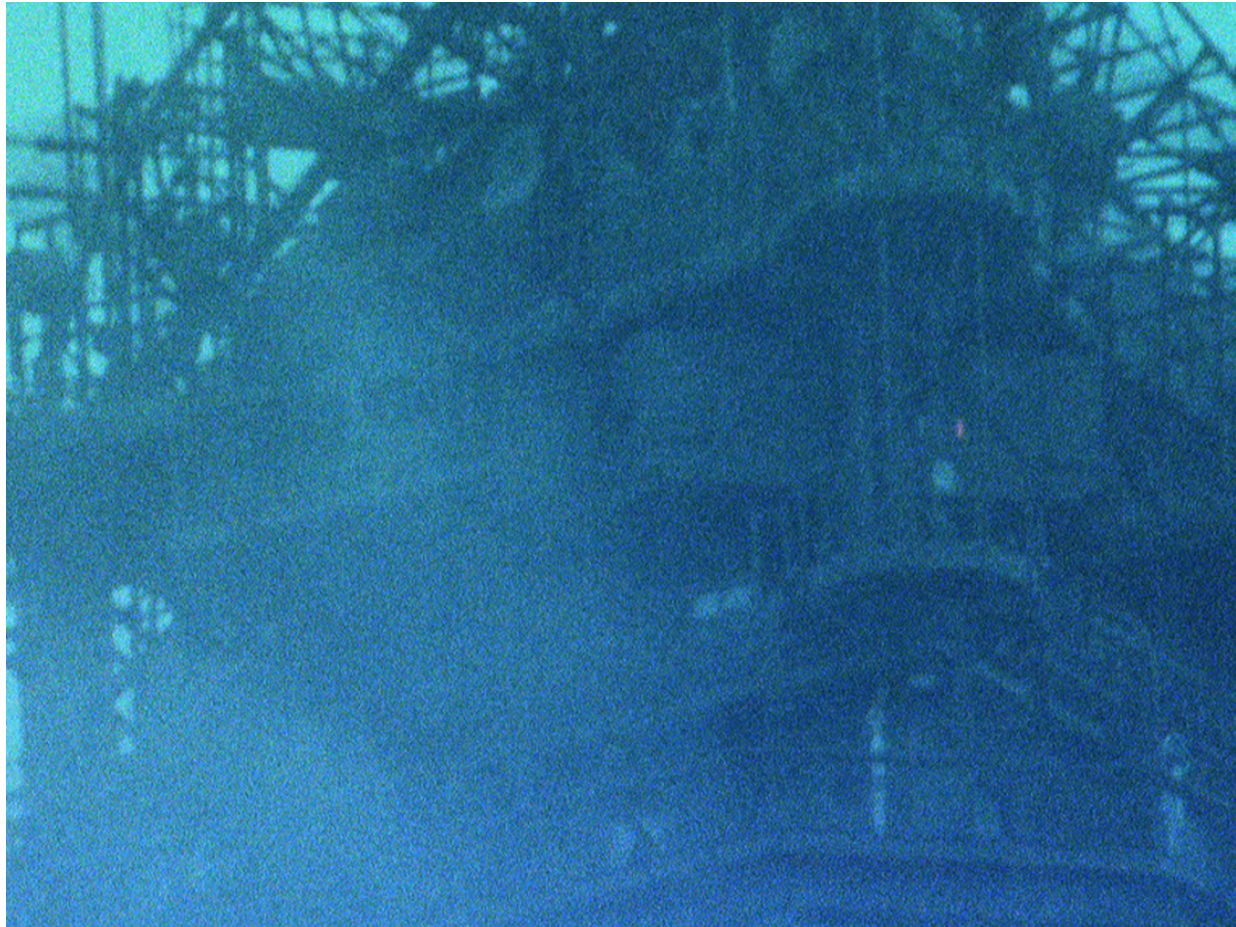


*Champagne Polka*, 2011, Instalation view at Gaudel de Stampa, Paris



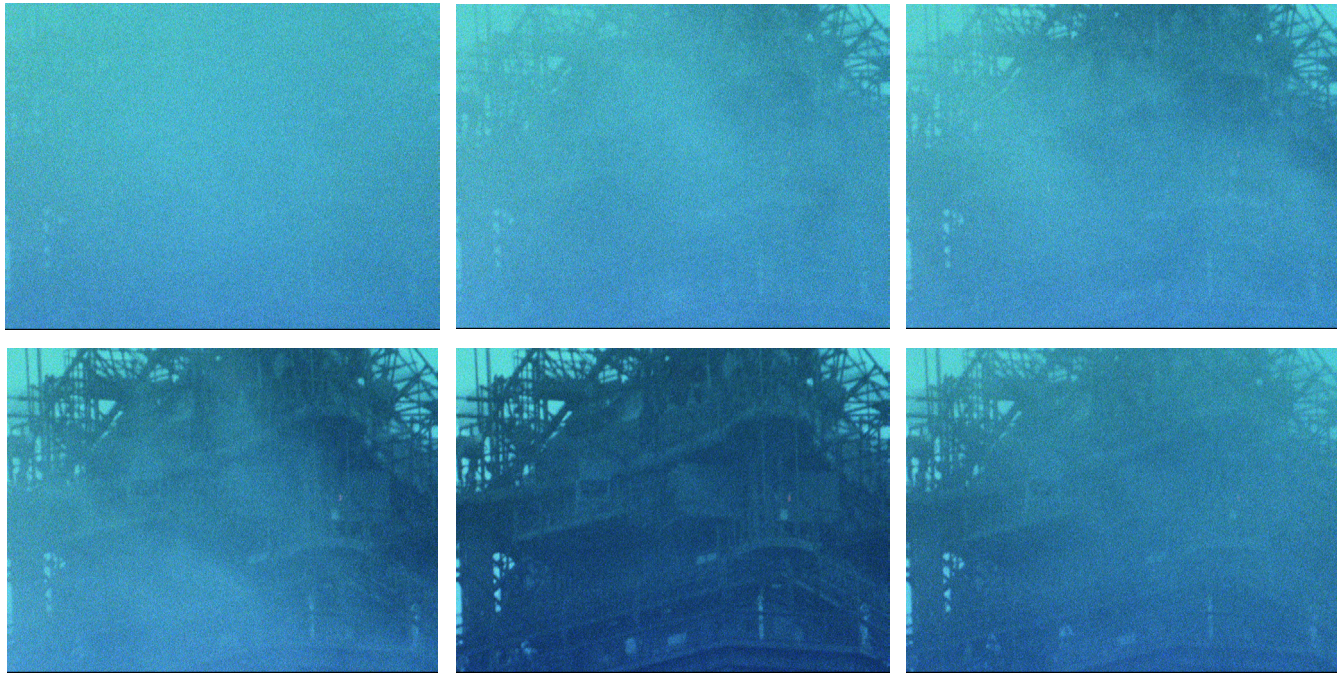


*Champagne Polka*, 2011, Instalation view at Gaudel de Stampa, Paris

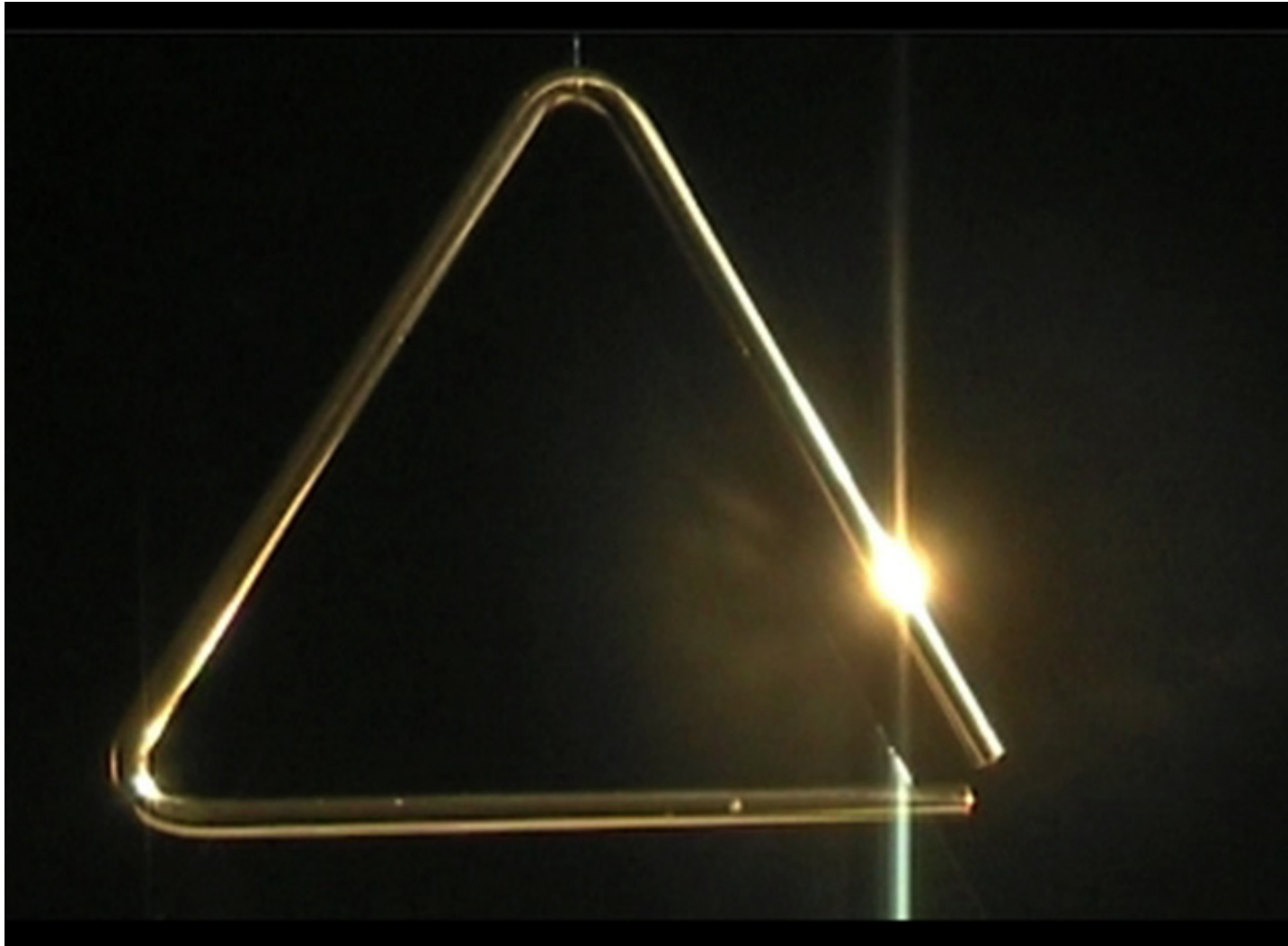


***Tower*** 2011  
Super 16mm, Digital transfer, 4:3 crop, 03:52 min

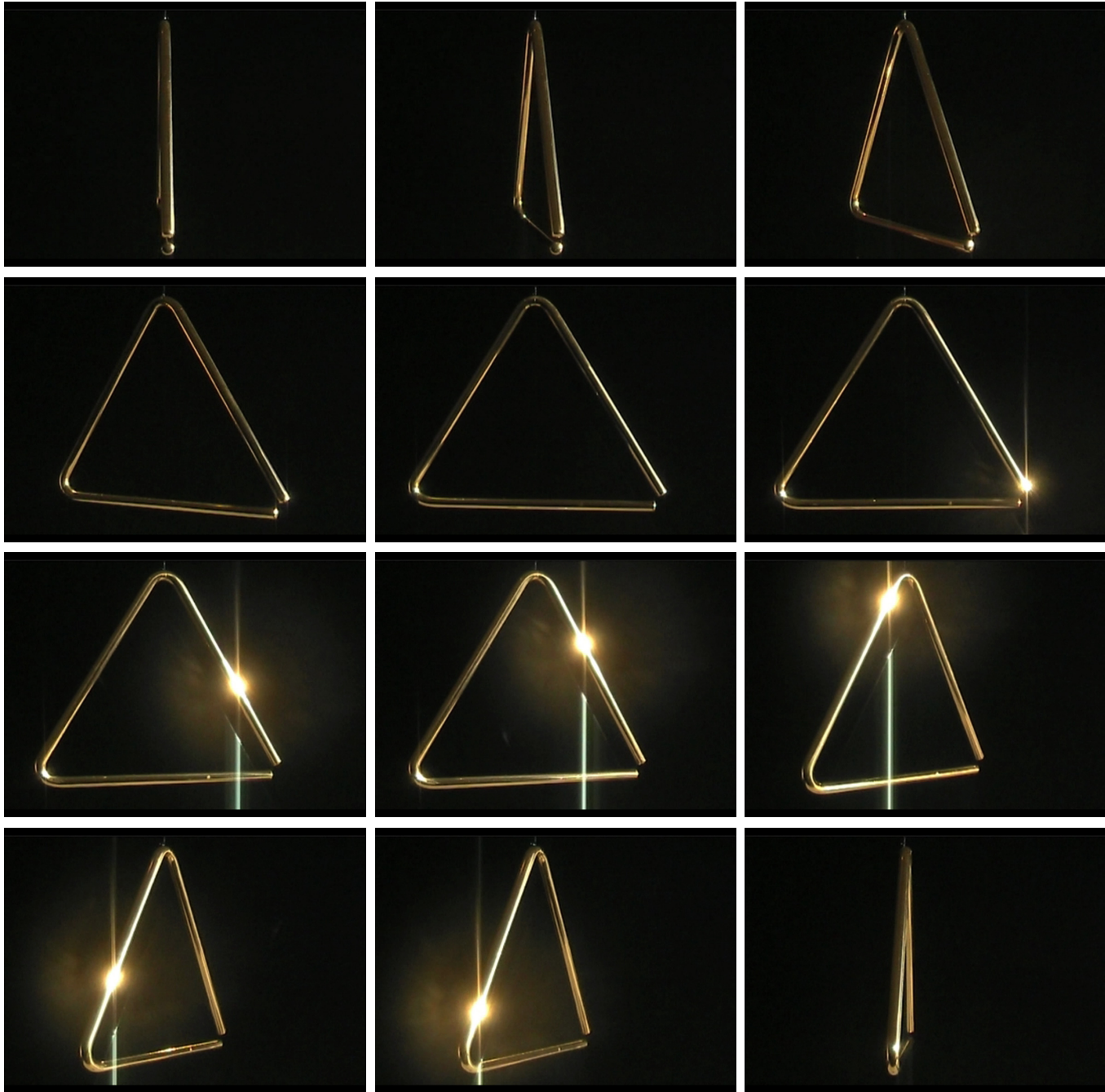




***Tower*** 2011  
Film still sequence  
( six frame extract)



*Triangle* 2010  
Video, 02:52 min



*Triangle* 2010  
Film still sequence  
(twelve frame extract)